

Campus Bike Routes


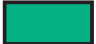










2011-2012

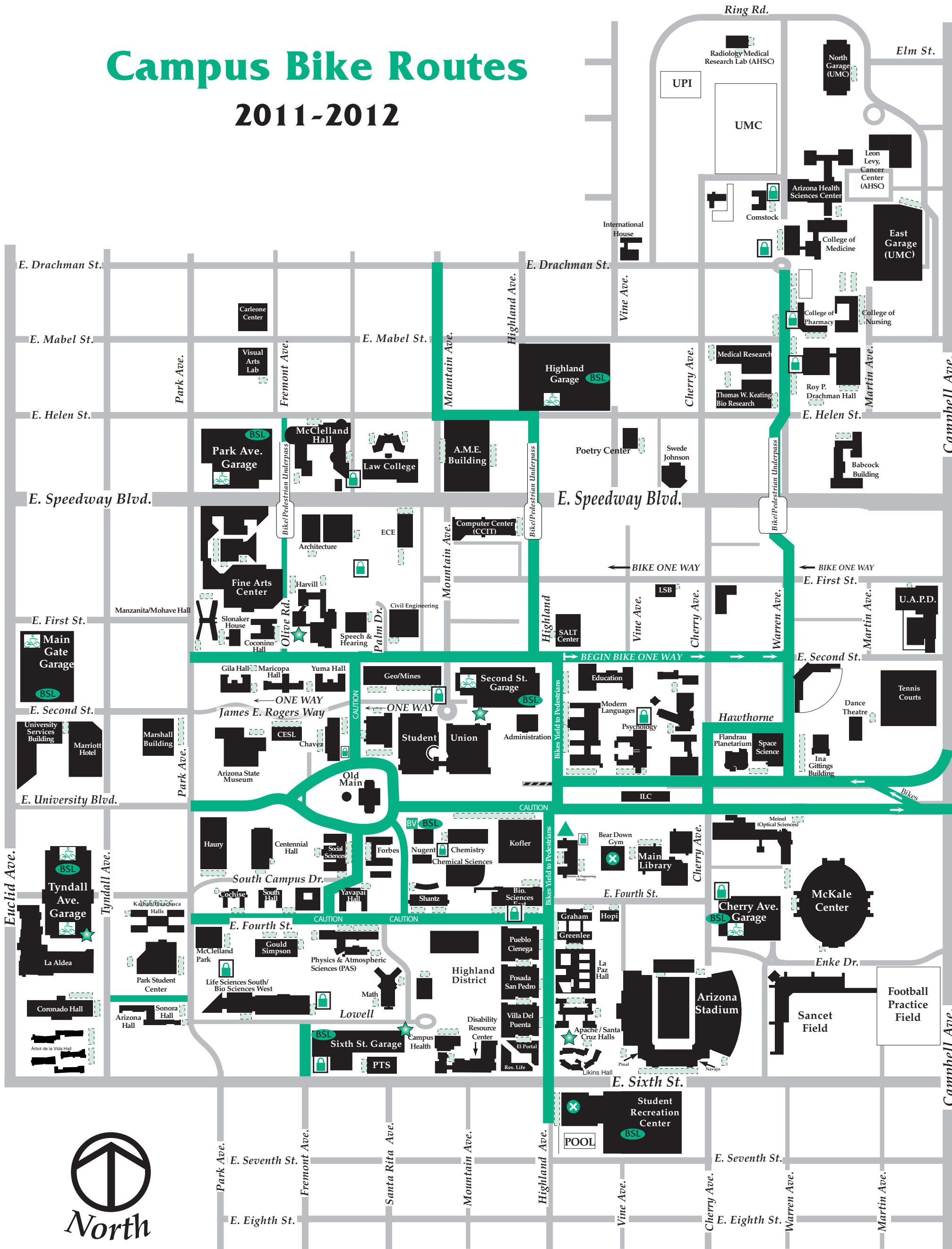
Bicycle Registration Program

FREE BICYCLE REGISTRATION IS AVAILABLE THROUGH PARKING AND TRANSPORTATION SERVICES. CALL 626-PARK FOR MORE INFORMATION OR REGISTER ON-LINE AT: WWW.PARKING.ARIZONA.EDU OR VISIT THE BIKE STATION ON TUES., WEDS. & THURS 9 AM - 2 PM

Registering your bicycle may help prevent bicycle theft and may help recover your bicycle in the event it is stolen or lost.

LEGEND:

-  Restricted Area
-  Bike Path/Route
-  Congested Area; yield to pedestrians
-  All campus streets are bicycle accessible.
-  FREE bicycle parking areas.
-  PAID secured bicycle parking areas. (\$)
-  PAID bicycle locker parking. (\$)
-  Car Sharing Programs
-  Bike Sharing Location
-  Campus Bicycle Station
-  Bike to Work Program
Shower Facilities
-  Bike Valet Station



Sidewalks are for pedestrians, not bicyclists. If you must use a sidewalk, please walk your bicycle.

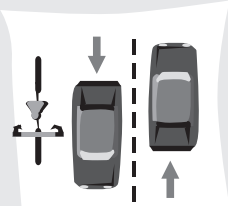
Sharing the Road Safely

Slowing Down

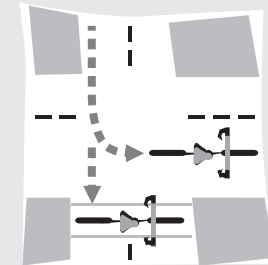


USE HAND SIGNALS
Hand signals tell motorists and pedestrians what you intend to do. Signal as a matter of law, courtesy and protection.

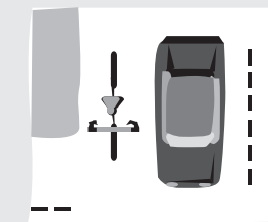
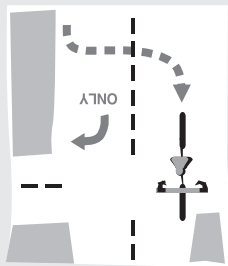
RIDE ON THE RIGHT WITH TRAFFIC
Ride with traffic. Motorists aren't looking for bicyclists riding on the wrong side of the roadway. Bicycling on the wrong side is particularly dangerous at intersections, roadway curves, and on the crests of hills.



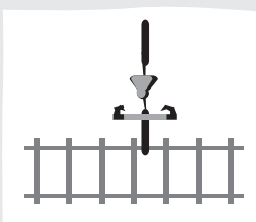
TURNING LEFT
(1) signaling, yielding to traffic, moving into the left lane, then turning left, or crosswalk, then walk your bike across.



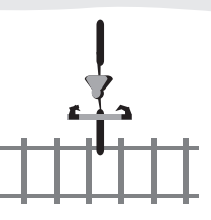
RIDING THROUGH INTERSECTIONS
When you're going straight through an intersection, move to the through-lane, avoiding the right-turn-only lane. Don't ride to the right of a right-turning motorist.



MOTORISTS: PASS WITH CARE
Motorist, please provide a reasonable safe distance (5 feet) from bicyclist when passing...thank you!



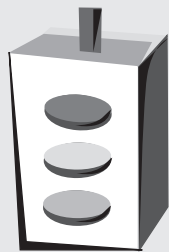
CROSS TRACKS & CATTLEGUARDS WITH CARE
Ride over railroad tracks and cattleguards at right angles only! This prevents wheels from getting stuck and causing a serious accident.



LOCK YOUR BIKE WHEN YOU'RE GONE
Lock your bike with a U-shaped lock or a strong cable or hardened chain. Lock to an immovable object such as a bike rack, putting the lock or cable through both wheels and frame.



OBEY TRAFFIC SIGNS, SIGNALS, & LAWS
Bicyclists must operate their bicycles like drivers of motor vehicles. Obeying laws helps you being taken seriously by motorists.



USE LIGHTS AT NIGHT
The law requires a white headlight and red reflector at night. Adding a tail light or amber reflector is also advisable. For extra visibility, wear light-colored clothes with reflective tape.



ALWAYS WEAR A HELMET
A helmet does 4 things for you: Makes you more visible; keeps your head cooler in the sun; helps gain motorists respect; and, most importantly, it protects your head.

- The University of Arizona earned a silver bicycle friendly university designation from the League of American Bicyclists in March, 2011
- City of Tucson, Rated "Second Best Mid-sized City for Cycling" – Bicycling Magazine 2006
- Outside Magazine names Tucson the best city for Road Biking
- The Tucson-Pima Eastern Region earned a Gold Bicycle Friendly Community rating from the League of American Bicyclists in April 2006.

2011-2012 CAMPUS BIKE MAP

Routes, Parking, Information Guide, Rules & Regulations Summary.



Whether you ride a bike, walk, or drive a car in Tucson, it's important to know how to use our street system to ensure everyone's safety. More people of all ages are using their bicycles for transportation and recreation than ever before. As a cyclist, you must be aware of your rights and responsibilities under the law. As a motorist, you should always be aware of these laws and how to interact with cyclists. Understanding your role in our multi-modal street system and obeying the laws will help make Tucson a bicycle friendly community.

Safety Tips for Cycling in Tucson

SELECT THE BEST ROUTE
Look for roadways that have less traffic volume, are wider, and follow a reasonably straight path. Use designated bike routes. They are planned for your safety and enjoyment as a bicyclist. A free Tucson Bicycle Map is available at Public Libraries. Your local bike shop or at www.paginatlong/bikemap.

PRACTICE DEFENSIVE CYCLING
Ride defensively and expect the unexpected. Pass with care. Watch for vehicles turning into your path, and never assume you know what a driver intends to do.

WATCH FOR HAZARDS
Regularly scan the roadway for cars, pedestrians, and unexpected hazards such as potholes, glass, and roadside trees that limit visibility. Ride at least 2 feet from the road edge to avoid debris and allow space to maneuver.

KEEP CONTROL OF YOUR BICYCLE
Keeping both hands on the handlebars allows you to make quick turns and stops. In rain, allow three times the normal distance to stop. Don't put your life or the lives of others in danger with careless riding. It's not worth it. Remember, no matter who is at fault in an accident, the bicyclist always loses.

USE COMMON SENSE
Ride over railroad tracks and cattleguards at right angles only! This prevents wheels from getting stuck and causing a serious accident.

Special thanks to City of Tucson, Department of Transportation - Alternates Modes Office and PAG for contribution of brochure copy.

THE UNIVERSITY OF ARIZONA, Bicycle and Non-Motorized Transportation Rules and Regulations Summary

The Rules and Regulations that govern operating, parking and the traffic of bicycle and non-motorized vehicles at The University of Arizona are summarized in this brochure and are contained in their entirety in the Bicycle (and non-motorized Transportation) Parking and Traffic Regulations. **A complete copy may be found at our website. <http://parking.arizona.edu>**

- A. Operation of Vehicles**
- I. Bicycles**
Bicycles shall be operated only on streets, roadways, bike paths, routes and areas designated for bicycle riding. **NO RIDING ON SIDEWALKS.**
- B. Parking Regulations**
- I. Knowledge of the Rules**
It is the responsibility of all individuals walking or operating a non-motorized device or bicycle on campus to read and fully understand these regulations. **Lack of knowledge of these regulations will not be accepted as grounds for dismissal of citations.** For assistance with bicycle citations/impoundment, M,T,W,F 8:00 A.M - 4:00 P.M. and Thursday 9:00 A.M - 4:00 P.M, call 626-PARK, after 4:00pm call 621-1108.
- 2. Parking Areas**
Bicycle parking is available throughout campus and is designated by the presence of bicycle racks, lockers, blocks, and/or specifically designated parking areas. Bicycles must be parked only within the boundaries of designated parking areas and/or properly attached to a bike rack or block. Parking and/or placement of other non-motorized devices must be approved by Parking and Transportation Services. Bicycle parking racks are not to be utilized as long term storage. Bicycles that are in a state of disrepair parked at racks or blocks and appearing to be abandoned are subject to impoundment. Bicycle related gear (or other items) should not be left alone at bicycle racks. Items such as; locks, chains, helmets, seats, wheels, etc. left on racks may be considered abandoned and are subject to impoundment.
- 3. Restricted Parking Areas**
Bicycles shall be parked in accordance with federal, state, and local fire and safety regulations. Bicycles shall not be parked or stored:
- in any University building (e.g. offices, residence halls, classrooms, or parking structures without a bicycle storage facility);
 - against or fastened to any tree, plant, bush, or foliage;
 - against or fastened to any water, steam or gas pipe, fitting, electrical fixture, fence, sign post, railing, public seating fixture, or emergency safety device;
 - upon or attached to any ingress/egress ramp, stairway or stairwell railing or otherwise fastened to or blocking any exit/entrance to any University building;
 - in any locked, controlled entry enclosure if access has not been authorized by Parking and Transportation Services; or
 - in any other area where parking is specifically prohibited by these regulations or by signs.

- Arizona Bicycle Laws**
- ARS 28-812.** Bicyclists have all the rights and responsibilities that motorists have and are expected to obey the same traffic laws.
- ARS 28-813.** Every person on a bicycle must have a regular seat to sit on.
- ARS 28-814.** Bicyclists must not hold on to, or attach their bicycles to another vehicle.
- ARS 28-815.** A) Bicycles, the same as slow moving vehicles, must be as far to the right of the road as is practicable and safe. Bicycles may move away from the right side of the road to pass other vehicles, to avoid parked cars, debris, and other obstacles, to make left hand turns, and to allow only safe over taking by other vehicles (when a lane is too narrow to safely share with another vehicle).
B) Bicyclists may ride no more than two side-by-side, except in locations exclusively for bicycle use.
- ARS 28-816.** Bicyclists must always have at least one hand on the handlebars.
- ARS 28-817.** (A) Any bicycle used at night must have at least a white headlight visible up to 500 feet away, and a red reflector visible up to 300 feet away.
(B) Bicycles may not be equipped with sirens or whistles.
(C) Every bicycle must have at least one brake in good working order.
- ARS 28-756.** Bicycles may signal right turns with their right arm and hand to the right.
- Tucson Bicycle Laws**
- SEC. 5-1. Parking of bicycles.**
It shall be unlawful to park a bicycle upon any public sidewalk or street in a manner that substantially impedes pedestrians or vehicular traffic or obstructs access to public or private facilities.
- SEC. 5-2. Riding on sidewalks and pedestrian paths, and through underpasses.**
(A) It shall be unlawful to ride a bicycle on any public sidewalks, or upon a designated pedestrian path in any public park, unless signs are posted specifically permitting bicycling.
(B) It shall be unlawful to ride a bicycle through any underpass when signs are posted prohibiting bicycling.
- SEC. 5-3. Enforcement.**
Any violation of a provision of this chapter shall be a civil infraction, unless otherwise specified, subject to the provisions of chapter 28 of this Code. Violations of this Chapter shall be deemed as civil infractions subject to sanction of twenty-five dollars (\$25.00) or more.
- SEC. 20-29. (I). Bicycle helmets.**
No person under eighteen (18) years of age shall ride a bicycle or be a passenger on a bicycle, ride in a restraining seat attached to a bicycle, or ride in a trailer towed by a bicycle unless that person is wearing a properly fitted and fastened bicycle helmet which meets current standards of the American National Standards Institute for protective headgear.

- CAMPUS BICYCLE PROGRAMS:**
- For more information on any of our programs, visit: www.parking.arizona.edu or call 626-7275.
- Bicycle Registration Program** – Registration is FREE and is available to UA students, faculty, staff, visitors.
- Bicycle Station** – Students and employees can receive "FREE" bicycle related services from our campus bicycle station tent located in front (north side) of the Science Library. Free services include: Bicycle Registration, bicycle maps/brochures/flyers and minor bicycle assistance/adjustments (restrictions apply). Hours 9 am - 2 pm on Tuesday, Wednesday and Thursday (excluding University Holidays).
- Bike Share Program** – Students and employees who would like to utilize a loaner bicycle can check one out FREE of charge (conditions apply) from one of eight bike stations on campus.
- Employee Bike to Work Program** – UA Faculty and Staff who bicycle to work are eligible to use locker and shower facilities (free of charge) at the Campus Recreation Center and Bear Down Gym between the hours of 6 am-10am, M-F (Excluding University Holidays). For more information call 626-3396 or visit <http://campusrec.arizona.edu>
- Bicycle Citation Diversion Program** – If you receive a civil traffic bicycle citation written within Pima County by a Police Officer you may be eligible to take a bicycle safety class and may have your ticket and points dismissed. Refer to your citation offense paperwork for exact details.
- Bike Valet Program** – Secure, FREE valet parking for bicycles in front of the Nugent Building. Open M-F, 8am – 6 pm.



Parking & Transportation Services

Park your bike with added security
Bicycle Lockers: Lease an individual high security bicycle locker by the semester or for the entire year. Fees: \$90 annually, \$80 refundable key deposit required.

Bicycle Racks: There are approximately 1,500 bicycle parking spaces on the UA campus. Locating bicycle parking close to your class or office will not be a problem for those riders who possess a good U-lock.

Bicycle Enclosures: Convenient, gated, keyless entry locked enclosures are available with individual assigned spaces that have security fencing, covered and protected from inclement weather. Fees: \$35 annual fee.

For more information 626-PARK (7275) or parking.arizona.edu

Campus Bicycle Programs: Bicycle Station:
Students and Employees can receive various FREE bicycle services from our campus bicycle station tent located in front of the Science Library. Free services include: Bicycle registration, bicycle maps/brochures/flyers and minor bicycle assistance/adjustments (restrictions apply). Hours 9am-2pm on Tuesday, Wednesday and Thursday (excluding University Holidays). For more information visit: <http://parking.arizona.edu>, Bicycle Station or call 626-PARK (7275).

Bike Share Program: Students and employees who would like to utilize a loaner bicycle can check one out FREE of charge (conditions apply) from one of eight bike share stations on campus. For more information visit: <http://parking.arizona.edu>, Bike Share, or call 626-PARK (7275).

Employee Bike to Work Program: UA Faculty and Staff who bicycle to work are eligible to use locker and shower facilities (free of charge) at the Campus Recreation Center and Bear Down Gym between the hours of 6am-10am, M-F (Excluding University Holidays). For more information call 626-3396 or visit <http://campusrec.arizona.edu>.

Bicycle Citation Diversion Program: If you receive a civil traffic bicycle citation written within Pima County by a Police Officer you may be eligible to take a bicycle safety class and may have your ticket and points dismissed. Refer to your citation offense paperwork for exact details.

Bike Valet Program – Secure, free valet parking in front of the Nugent Building. Open M-F, 8am-6pm. Call 626-PARK for more info.